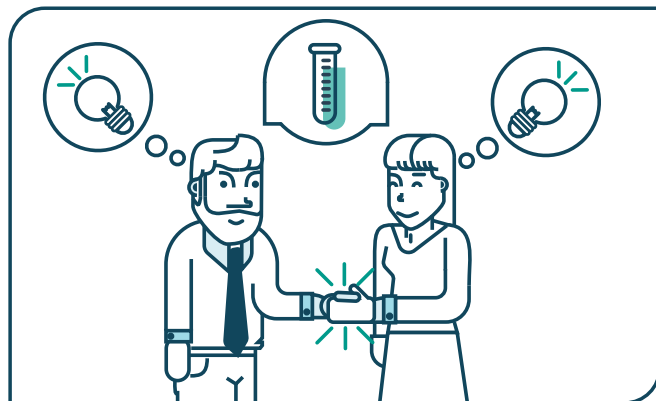


## ENABLE in a nutshell

ENABLE events are the first biomedical science symposia for PhDs and Postdocs to be held at the European level. Involving young scientists, this event seeks to encourage them to open up the academic world from within, to promote crosstalk between disciplines, to collaborate with industry and to communicate with society. The 2018 ENABLE conference will include the following aspects:

- A top-level scientific symposium to bring together leading scientists, PhD students, and Postdocs to discuss cutting-edge techniques and model systems that are revolutionizing biomedical research. The conference is devised in a way that allows close interaction with top scientists through more informal discussion sessions
- An opportunity fair to support the progression of young researchers into different sectors and to foster discussion about opportunities beyond the bench.
- A programme of outreach activities to stimulate interaction between science and society.





ENABLE is a project funded by the European Union Horizon 2020 programme involving four renowned European Research Institutes (IRB Barcelona - Spain, RIMLS - Netherlands, NNF CPR - Denmark, SEMM - Italy) and the science communication agency Scienseed. The programme of ENABLE is designed by young researchers with the aim to empower them regarding future career options.



## ENABLE 2018 information

May 3 - July 31 ..... Early registration  
June 30 ..... Travel grants application deadline  
August 1 - September 30.. Late registration  
November 7-9..... ENABLE 2018

### Find out more about ENABLE:

 [www.enablenetwork.eu](http://www.enablenetwork.eu)  
 [info@enablenetwork.eu](mailto:info@enablenetwork.eu)  
 [www.facebook.com/EnableNetworkEU](https://www.facebook.com/EnableNetworkEU)  
 [www.twitter.com/EnableNetworkEU](https://www.twitter.com/EnableNetworkEU)



### Location:

Niels K. Jerne Auditorium  
Mærsk Tårnet  
Blegdamsvej 3B  
2200 Copenhagen N



### SPONSORED BY:



### FUNDED BY:



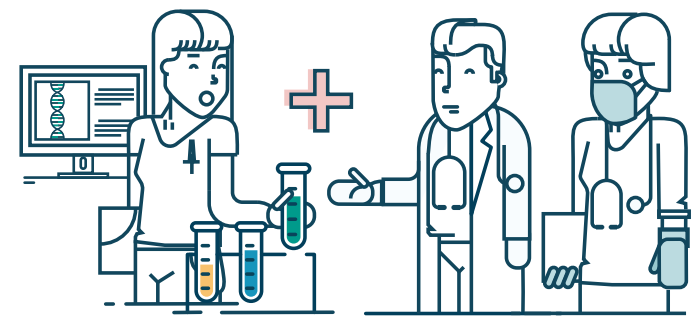
This project has received funding from the European Union's H2020 research and innovation programme under grant agreement 724115



# enable

EUROPEAN ACADEMY FOR BIOMEDICAL SCIENCE

## THE PROMISE OF FUTURE MEDICINE: FROM RESEARCH TO THERAPY



## The 2<sup>nd</sup> European PhD and Postdoc Symposium Copenhagen, 7-9 November 2018

# ENABLE 2018 PROGRAM



**Career Day**  
7<sup>th</sup> November 2018

## OPPORTUNITY FAIR

Networking area to meet companies, journals and industry professionals; and to find future employment opportunities



## CAREER CHATS

Learn from professionals from industry and academia about different career paths starting from your PhD

## WORKSHOPS ON:



Scientific writing



Transferable skills



Job interviews



Intellectual property



CV writing



Business planning



Gender balance



Science communication

## SCIENTIFIC SYMPOSIUM

8<sup>th</sup> November 2018

### SESSION 1: Disease modelling for drug discovery

**Prof. Giuseppe Testa** / University of Milan  
*Modelling Disease through cell reprogramming*

**Prof. Matthew Wood** / University of Oxford  
*Gene therapy for degenerative disorders of the nervous system and muscle*

### SESSION 2: Targeted therapies in cancer

**Prof. Janine Erler** / BRIC, University of Copenhagen  
*The role of the tumor microenvironment in stimulating cancer cell growth, invasion, and metastasis*

**Prof. Andrea Bertotti** / Candiolo Cancer Institute - IRCCS  
*Exploring the mechanisms of tumor dependency on oncogenic drivers*

9<sup>th</sup> November 2018

### SESSION 3: Novel strategies to fight infectious diseases

**Prof. Bali Pulendran** / Stanford University  
*The crosstalk between innate and adaptive immunity, and the development of new vaccines by using systems biology approaches*

**Prof. Helen Lee** / University of Cambridge / President and CEO of Diagnostics for the Real World Ltd (DRW)  
*Diagnostic tools for detection of infectious diseases in resource-poor settings*

### SESSION 4: From biomarkers to diagnosis

**Prof. Klaus Pantel** / University Medical Centre Hamburg-Eppendorf  
*Liquid biopsy strategies for cancer diagnosis and treatment*

**Prof. Nazneen Rahman** / The Institute of Cancer Research in London  
*Discovery and characterisation of cancer susceptibility markers*

### Closing Ceremony

**Prof. Michel Morange** / University Paris VI / École Normale Supérieure  
*The transformation of biology over the last one hundred years. What to expect next?*

## SCIENTIFIC EXCHANGE

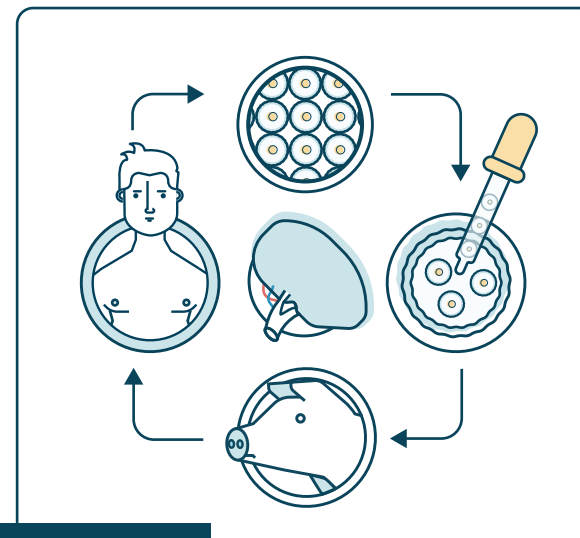
8<sup>th</sup>-9<sup>th</sup> November 2018

### POSTER PRESENTATIONS

Participants are encouraged to share and discuss their own research.

### DINNER WITH SPEAKERS

Informal evening finger-food to encourage open exchange with invited speakers.



### Outreach Activities

ENABLE brings science closer to society through several activities aimed at school children, highschool students or adults

### ASK THE SCIENTIST

Have you ever heard stories of organ donation? Have you ever read news of people dying because they had no donor? Have you ever considered donating? A debate about biotechniques, state-of-the-art results, and ethical issues.

### MICROTALKS

Participants also have the opportunity to get involved by giving short talks on biomedical concepts at various pubs in the city of Copenhagen. Dedicated training is available for selected participants, so check out the registration site for more information!

### CROSSDISCIPLINARY SESSION

A high quality, inspirational round-table discussion involving the participation of 4 well-known figures, including a scientist, from various professional fields.